



Prepared in association with the 2019 Airport Master Plan

Sustainability Takes Flight

2019 Highlights Report





A MESSAGE FROM THE DIRECTOR



At Burlington International Airport (BTV), we are focused every day on making smart choices about our energy use and impact on the environment.

Through local partnerships and the support of several

local, state, and regional energy plans and targets, we are committed to be a leader in advancing sustainability and decarbonization within the great State of Vermont.

As you will see from this highlights document, much of our past, present, and future has been built around fiscal and operational sustainability. Furthermore, we are guided by the goals and targets set forth in several local, state, and regional plans, including the City of Burlington's Climate Action Plan, Chittenden County's 2018 ECOS (Environment, Community, Opportunity, and Sustainability) Plan, and the 2016 Vermont Comprehensive Energy Plan. Components of these plans support making BTV a climate-friendly and financially sustainable airport.

Some highlighted actions we have undertaken to date to advance sustainability include:

- › Installing renewable energy systems such as solar photovoltaics at various BTV facilities;
- › Upgrading the terminal building's air handling units with high-efficiency units; and
- › Partnering with the Burlington Electric Department to implement other energy-efficient equipment upgrades throughout the Airport campus.

We have and will continue to work diligently to make a positive contribution toward the region's economic, environmental, and social vitality. We are extremely proud of the hard work of BTV employees, as well as the great partnerships with local organizations and the community as a whole, that are making the Airport a leader in its commitment to sustainability.

Nicolas Longo, C.M.
Director of Aviation

INTRODUCTION

As a gateway to northern New England, Burlington International Airport (BTV) recognizes its role as a leader and collaborator in advancing sustainability within its own operations as well as in the larger region. Guided by the City of Burlington’s 2030 vision, as laid out in the *Legacy Action Plan*, BTV continually strives to make a positive contribution toward the region’s economic, environmental, and social vitality.

From the installation of a utility-scale solar photovoltaic (PV) array on the roof of the Airport’s parking garage, to award winning stormwater treatment systems, BTV continues to demonstrate its commitment to sustainability in the way it operates and develops, while ensuring quality service to its passengers, neighboring communities, and business partners.

BTV recognizes that there is still much to be done. While this document provides a snapshot of its past, current, and future sustainability efforts, the Airport

looks forward to embarking on a more comprehensive sustainability management planning process in the future.

BTV is proud to showcase the Airport’s progress in advancing sustainability. Highlights of the Airport’s achievements to-date, including key initiatives, tenant success stories, and ongoing regional coordination, are organized under the following focus areas:

FOCUS AREAS



ENERGY & GREENHOUSE GAS EMISSIONS



WASTE MANAGEMENT



GROUND TRANSPORTATION



WATER RESOURCES



PASSENGER EXPERIENCE

Defining Sustainability at BTV

BTV’s Sustainability Vision is built upon a framework developed by the Airports Council International-North America (ACI-NA), in which airport sustainability is defined as “a holistic approach to managing an airport so as to ensure the integrity of the **E**conomic Vitality, **O**perational Efficiency, **N**atural Resource Conservation, and **S**ocial Responsibility (EONS) of the airport.” In addition to following this EONS framework, BTV also makes sure that its sustainability initiatives align with the City of Burlington’s 2030 vision, as laid out in its *Legacy Action Plan*. The City’s vision is motivated by the intersection of the four E’s (economy, environment, equity, and education) and aims to “meet the needs of current generations without compromising the ability of future generations to meet their own needs.”



Sustainability as an EONS framework. Source: ACI-NA

ENERGY & GREENHOUSE GAS EMISSIONS

BTV actively seeks to reduce its energy consumption, even as operations at the Airport expand, and it continues to demonstrate leadership in sustainable energy performance. Energy savings are made possible through local partnerships with entities such as the Burlington Electric Department, the first municipal electric department to source 100 percent of its electricity from renewable sources.

Daily operations and construction activities at BTV are powered primarily by a combination of electricity from the Burlington Electric Department and natural gas from Vermont Gas Systems. Other fuels such as diesel and gasoline power the vehicle fleet and equipment that support the Airport's operations and Jet-A and Avgas generally power the aircraft that operate at the Airport. **Between 2013 and 2017, BTV reduced its utility-sourced electricity consumption by 12.4 percent.** This is in large part due to energy efficiency projects completed at the Airport.

1,183,000

kWh per year

Avoided annual electricity usage as a result of recent energy-efficient upgrades at BTV.

\$147,750

in annual savings

Cost savings from the nearly 1.2 million kilowatt-hours (kWh) avoided in annual electricity consumption.



PHOTO CREDIT: DAVID CARMAN

The Airport boasts several renewable energy systems, including the utility-scale solar PV array on the roof of the parking garage. This 2,000 panel, 500-kW system was installed at a cost of \$1.5 million in 2015, but is expected to generate a savings of \$3.5 million over the following three decades. Since its installation, this solar PV array generates on average 613,000 kWh per year – enough to supply power for almost 100 homes in Vermont annually.

In 2017, the parking garage solar PV array provided 11 percent of the Airport's total electricity.

“We are focused every day on making smart choices about our energy use and impact on the environment.”

Gene Richards, Aviation Director,
Burlington International Airport



The Vermont Air National Guard (ANG) received an \$8.8 million federal grant to study and develop a solar PV system to help power its operations at BTV. Installed in 2011, the approximately 1.5-megawatt (MW) system is estimated to save the ANG \$256,049 annually.

PHOTO CREDIT: VERMONT ANG

Collectively, on-site renewable energy systems at the Airport include:

- › 500-kW roof-mounted solar PV on top of the Airport’s parking garage (BTV)
- › 24-kW roof-mounted solar PV (Heritage Aviation)
- › 100-kW small wind turbine (Heritage Aviation)
- › 1.5-MW ground-mounted and roof-mounted solar PV (Vermont ANG)

Highlighted Initiatives

Energy System Upgrades

By 2010, in partnership with the Burlington Electric Department, BTV replaced all outdated fluorescent and incandescent light bulbs in its parking garage with energy-efficient LEDs. Although BTV expanded the facility to nearly twice its original size, it is using less than half the energy. Other significant energy efficiency measures that BTV completed at the Airport include:

- › Upgrading the terminal’s 50-year-old heating and cooling system;
- › Replacing terminal, roadway, and parking lot lighting with compact fluorescent lamps and LEDs; and
- › Upgrading the terminal’s air handling units;
- › Applying white roofing materials/surfacing to select on-Airport facilities.
- › Converting taxiway lighting from incandescents to LEDs;



Tenant Spotlight: Heritage Aviation Facility

Heritage Aviation’s facility at BTV received Gold-level Leadership in Energy and Environmental Design (LEED®) status from the U.S. Green Building Council in 2011. This facility provides full general aviation maintenance and repair services. In addition to its wind turbine and roof-mounted solar PV, its sustainable features include one of the largest

green roofs in the New England region, a light-monitoring system that adjusts lighting output based on ambient conditions, and a solar-powered hot water heater. The wind turbine at Heritage Aviation, installed in 2009, is the first wind installation at a general aviation facility in the U.S.

PHOTO CREDIT: DAVID CARMAN





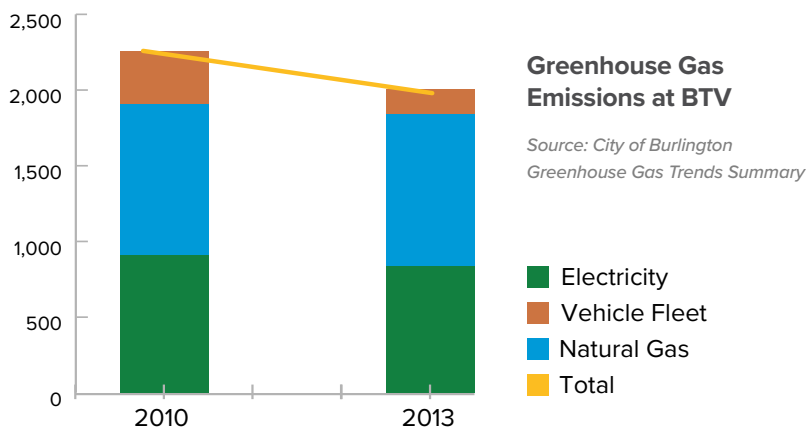
An interactive sustainability installation titled “What does green look like?” educates visitors on BTV’s energy efficiency and conservation initiatives.

PHOTO CREDIT: VHB

Greenhouse Gas Emissions

Airports contribute to greenhouse gas emissions when they rely on fossil fuels to produce electricity, heat and cool buildings, and power vehicles. Specific sources of ground-based greenhouse gas emissions are typically Ground Support Equipment (GSE) powered by gasoline or diesel fuel; auxiliary power units, which use jet fuel to power aircraft before they take off; and lighting and HVAC systems at airport facilities that run on electricity from power plants that combust fossil fuels.

BTV strives to reduce its greenhouse gas emissions primarily through the energy efficiency measures it undertakes. Between 2010 and 2013, greenhouse gas emissions deriving from electricity, natural gas, and vehicle fleet fuel consumption decreased by approximately 23 percent, from 2,287 tons of carbon dioxide equivalent (tCO₂e) to 1,771 tCO₂e (see figure below). **The 516 tCO₂e avoided are enough to offset the greenhouse gas emissions from about 99 passenger vehicles driven for one year or approximately 1,144,517 miles.**



Regional Coordination

Energy efficiency and conservation at the Airport support several local, state, and regional energy plans and targets. Highlighted plans and their targets include the City of Burlington's *Climate Action Plan*, which aims to reduce energy consumption at the Airport by 10 percent below 2010 levels by 2025, as well as:

- › The 2018 *ECOS (Environment, Community, Opportunity, and Sustainability) Plan* calls for Chittenden County to derive 90 percent of its energy needs from renewable sources by 2050.
- › The 2016 *Vermont Comprehensive Energy Plan* establishes three main goals:
 - Reduce per capita energy consumption by 15 percent by 2025 and by more than one third by 2050;
 - Meet 25 percent of the State's remaining energy needs from renewable sources by 2025, 40 percent by 2035, and 90 percent by 2050; and
 - Achieve 10 percent renewable transportation, 30 percent renewable buildings, and 67 percent renewable electric power by 2025.

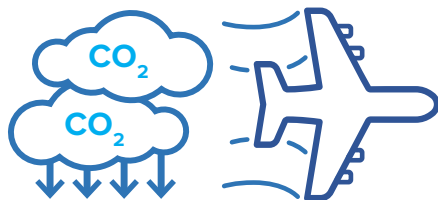


**A SUSTAINABLE FUTURE
FOR CHITTENDEN COUNTY**

© ECOS

LOOKING FORWARD TO THE FUTURE

BTV plans to engage in a program that will afford passengers the opportunity to purchase their own offsets equivalent to the distance of their flights. Carbon offsets represent a reduction in greenhouse gases made (typically by funding renewable energy projects) to compensate for emissions generated elsewhere. In this case, the emissions generated are associated with an individual passenger's air miles.



BTV plans to install short-term bicycle parking and long-term bicycle storage on the ground floor of the Airport's parking garage to continue to recognize and promote cycling as a viable means of transportation for the Airport's users and employees.

WASTE MANAGEMENT

Airports generate a variety of waste streams including municipal solid waste (MSW) (i.e., everyday items that are discarded and not diverted from landfill), construction and demolition (C&D) waste, compostables (i.e., yard and food waste), waste removed from passenger aircrafts, and hazardous waste (i.e., fuels and oils).

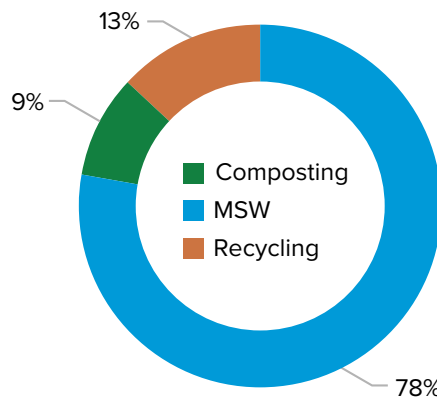
BTV is committed to minimizing the production of waste from its facilities and operations, while maximizing diversion opportunities including through recycling and composting. It has a long-standing solid waste plan that addresses operations Airport-wide, including tenant operations.

The total cost of waste collection in 2017 was approximately **\$38,600**. More than half of this was attributable to MSW. BTV's recently renewed contract with Casella Waste Systems incentivizes recycling and composting, as there are no associated hauling fees like there are for trash disposal. The more the Airport diverts its waste from landfill disposal, the more money it saves!

In 2017, the Airport generated approximately

273 tons of solid waste

which includes MSW, recyclables, and compostables.
Calendar Year (CY) 2017



Solid Waste Disposal and Diversion (CY 2017)

Source: City of Burlington Greenhouse Gas Trends Summary

The Airport's diversion rate in CY 2017:

22%

MSW hauled from the Airport is taken to the landfill at Coventry, which has a gas-to-energy facility operated by Washington Electric Co-op. This facility converts landfill gas (i.e., methane) into electricity. It has a generating capacity of **8 MW** and produces enough electricity to provide approximately two-thirds of the Co-op's power demand.



Recycling at the Airport is zero-sort, which means all recyclables are collected in the same recycling bin to be eventually hauled, sorted, and processed off-site. Recyclables collected at the Airport generally include cardboard/paper (e.g., corrugated cardboard, boxboard, newsprint, and office paper); plastic containers; metal and food cans; and glass bottles.

Highlighted Initiatives

Maximizing Waste Diversion and Minimizing Costs

To increase its diversion rate and reduce the cost of waste management at the Airport, BTV has implemented several measures:

- › Instituted an office paper recycling program through which office paper is shredded and downcycled into toilet paper and paper towels that are then returned to the Airport for its use.
- › Co-locates trash and recycling bins in the terminal to encourage passengers to sort their waste properly.
- › Includes picture-based signage on all co-located trash and recycling bins that clearly depict what can and cannot be recycled. This signage is placed on top of the bins at the point of disposal.
- › Installed water bottle filling stations post-security to encourage passengers and employees at the Airport to bring and use reusable alternatives to disposable bottles.
- › Requires its waste contractor to regularly work with the Airport and the Airport's tenants on ways to reduce waste and increase the use of products that can be recycled, as well as to provide training on proper waste management practices.



Housing Removal Project

In 2015, BTV was named an honorable mention recipient by the American Association of Airport Executives (AAAE) at the Airport's Going Green Conference for its House Removal, Material Recycling, and Site Restoration Project. Supplied with grant funding from the Federal Aviation Administration's Airport Improvement Program, BTV acquired and removed homes within the Airport's 65-decibel noise contour.



© AAAE

A key objective of this project was material recycling, including asphalt shingles, roof plywood sheathing, roof trusses, and concrete masonry. **By project completion, more than 42 percent of materials were recycled!**



Tenant Spotlight: The Skinny Pancake

The Skinny Pancake, one of the concessionaires at BTV, has gone above and beyond when it comes to waste diversion at the Airport. The company has a corporate zero-waste initiative that includes back-of-the-house composting and provides for extensive employee training on sorting recyclables from food scraps, cooking oil, and grease.

In addition to carefully tracking food purchases to minimize waste, the Skinny Pancake offers a discount on excess items such as day-old baked goods or donates them to local food pantries, as appropriate.

PHOTO CREDITS: VHB



LOOKING FORWARD TO THE FUTURE

BTV expects to expand composting at the Airport in the near future. Other potential initiatives that have been implemented at other airports and could be adopted by BTV to improve its waste management performance include:

- › Instituting an Airport-wide food donation program for local homeless shelters and other charities;
- › Implementing a recycling advertising program throughout the terminal to educate passengers on proper waste disposal procedures;
- › Reducing or eliminating single-use products within BTV's operations and encouraging tenants to do the same; and
- › Donating excess equipment and other goods to local non-profit organizations.



Regional Coordination

As a large facility in the region, BTV has the opportunity to demonstrate leadership with its waste reduction efforts while making a big difference in the achievement of local and state waste reduction goals. For example:

- › Burlington's *Climate Action Plan* generally calls for a reduction in the amount of waste sent to landfills; and
- › The *Vermont Materials Management Plan* outlines the State's strategy to achieve a "zero waste future."

In 2018, Vermont's 2012 Universal Recycling Law (Act 148) was updated to reflect a full ban on food scrap disposal at landfills by July 1, 2020. Act 148 already bans "blue bin" recyclables, leaf/yard debris, and clean wood.

GROUND TRANSPORTATION

BTV's efforts to increase the accessibility and use of sustainable transportation modes such as public transit, ride-sharing, and electric vehicles support its greenhouse gas emissions reduction efforts, while also improving local and regional air quality.

BTV works on an on-going basis to make it easier to get to and from the Airport sustainably. Among travelers' ground transportation options, Green Mountain Transit's Route #12 connects the Airport to points in Burlington, South Burlington, and the University of Vermont.

To encourage alternative transportation within its own operations, BTV offers **free Green Mountain Transit Bus passes** to all of its direct employees.

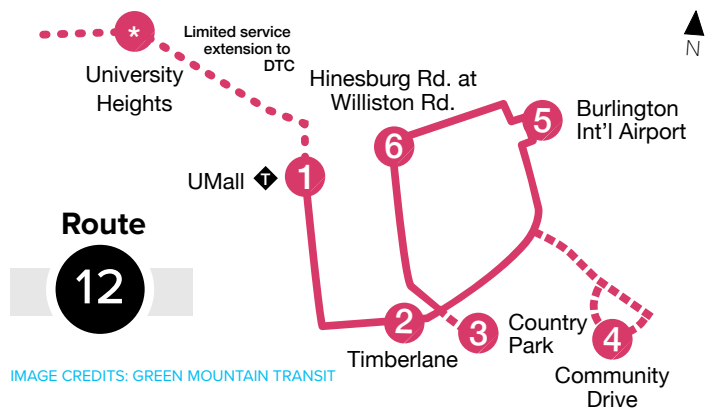


IMAGE CREDITS: GREEN MOUNTAIN TRANSIT



PHOTO CREDITS: VHB

Highlighted Initiatives

Parking Garage Enhancements

The Airport's parking garage includes passenger convenience accommodations such as a bike rack and walkways to make it safer for people to move within and in/out of the facility. It has a revenue control system that promotes improved air quality – in-terminal payment kiosks reduce back-ups (and associated vehicle idling) at garage exits. This facility also boasts **15 electric vehicle charging stations**.

The provision of adequate parking offers passengers a choice in transportation. In the process, it reduces the need for more environmentally undesirable visitor drop-offs/pick-ups, which can generate up to four trips per air passenger, as opposed to parkers, who generate just two trips.

Rideshare and Bikeshare at BTV

BTV is a member of the Chittenden Area Transportation Management Association (CATMA), which seeks to provide sustainable transportation options for its members' employees.

Examples of CATMA programs and services include: Carpool/Vanpool Support, a Guaranteed Ride Home Program, and a Bike/Walk Rewards Program. BTV is also an annual sponsor of Greenride Bikeshare, a system that allows users to reserve and return bikes among the system's many bike racks in Burlington and South Burlington. The Airport has a hub, along with a soon-to-be delivered e-bike station, outside Door 3 at the terminal.

BTV actively supports ride-sharing and provides a designated parking lot and drop-off/pick-up areas for transportation network companies (TNCs) such as Uber and Lyft to

mitigate passenger wait times and reduce re-circulating traffic. Another TNC, South Burlington-based Green Cab VT, offers service to/from the Airport using vehicles with alternative-fuel engines.

Additionally, the Airport has a CityGreen Employee Bikeshare station. CityGreen Employee Bikeshare is a City of Burlington program, where 15 bikes are dispersed around different locations for City employees to use freely for work or recreational purposes.



© CATMA



PHOTO CREDIT: BTV

In a first for the nation, **Green Mountain Transit**, which offers a direct route to the Airport, tested a battery-electric transit bus in 2017. The pilot program was conducted in partnership with the Burlington Electric Department and the Vermont Energy Investment Corp.

This bus produces

0

emissions

and has a range of

160

miles on a single charge.



Tenant Spotlight: Beta Technologies

Beta Technologies, operating out of an Airport hangar, is on the cutting edge of electric aviation. Its eVTOL (electric vertical takeoff and landing vehicle) is set to be formally unveiled in 2019. BTV's leadership has been supportive of this project.

PHOTO CREDIT: BETA TECHNOLOGIES



LOOKING FORWARD TO THE FUTURE

To reduce personal vehicle miles traveled, improve local and regional air quality, and reduce greenhouse gas emissions, BTV is undertaking several initiatives with respect to Ground Transportation:

- › In collaboration with Local Motion, a nonprofit that promotes safe walking and biking options in Vermont, BTV is working to secure a bike maintenance locker inside the parking garage.
- › BTV is aiming to add two new bike racks to accommodate passengers, visitors, and employees who bike to and from the Airport.
- › BTV is exploring greening its own vehicle fleet by procuring electric vehicles and encouraging the rental car companies at the Airport to do the same. Rebates on electric vehicles are available through the Burlington Electric Department as part of the City's effort to transition to Net Zero Energy in the ground transportation sector.



PHOTO CREDIT: DAVID CARMAN

Regional Coordination

Making ground transportation to and from the Airport more accessible and efficient requires partnerships with agencies and organizations that impact the regional transportation network. BTV fosters such partnerships, exemplified by its work with the Chittenden County Regional Planning Commission (CCRPC) on initiatives such as the I-89 Corridor Study to enhance access to the Airport.

Other related regional sustainable transportation initiatives include:

- › The *2018 ECOS Plan* seeks multi-modal transportation improvements around the Airport, including an Airport Parkway Shared Use Path for bicycle and pedestrian use and an extension of Airport Drive to Airport Parkway. This plan also notes the lack of a direct connection between the Airport and Green Mountain Transit's new Downtown Transit Center.
- › The *Vermont Comprehensive Energy Plan* puts forth the goals of 10 percent renewable energy in transportation by 2025 and 80 percent by 2050.

WATER RESOURCES

BTV ensures that its actions protect, preserve, and enhance local and regional water resources, which include surface water, groundwater, wetlands, and floodplains.

In addition to being a key component of the natural environment, water resources also serve important functions for human society by providing drinking water; supporting recreation, transportation, and commerce; and acting as mechanisms for natural hazard mitigation to protect and increase the resilience of surrounding communities.

Highlighted Initiatives

Wetlands Mitigation Efforts

BTV has three State-designated wetlands totaling nearly 35 acres. To help protect these resources, the Airport has introduced measures across its facilities and operations to prevent pollution and comply with all applicable stormwater and water resource protection regulations.

Stormwater Treatment

In 2010, BTV won an Engineering Excellence Award from the American Council of Engineering Companies/Vermont Section for its runoff treatment system. As an airport in a winter climate, BTV must use de-icing fluid to avoid ice build-up on aircraft prior to their departure. This fluid contains propylene glycol,

which can negatively impact aquatic life in nearby lakes and streams. The Airport's system treats glycol-contaminated stormwater runoff through an on-site infiltration field that mimics natural cleaning processes.

BTV recently completed the installation of a new underground stormwater treatment system to treat runoff from one mile of new taxiway (Taxiway G) at the Airport to prevent contaminants from directly discharging into the Winooski River. Based on average annual rainfall in the state, approximately 22 million gallons of runoff will be treated each year – equivalent to over 33 Olympic-size swimming pools!

PHOTO CREDIT: STANTEC



Rooftop Garden

Installed in 2011, the 8,000 square foot rooftop garden on top of the Airport's parking garage is an example of a green roof. The roof, which already offers spectacular views of the Green Mountains, provides visitors with a place to relax in an attractive setting. The garden's plants and grasses, which initially included thousands of Alpine plants across 45 varieties, also have the benefit of reducing/ filtering stormwater runoff.

PHOTO CREDIT: DAVID CARMAN



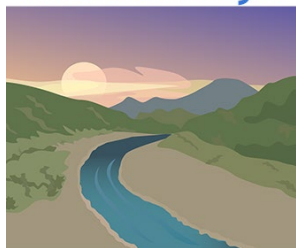
LOOKING FORWARD TO THE FUTURE

BTV is in the process of planning a new Quick Turnaround facility for rental cars, which would fuel and clean vehicles between renters. This new building will be designed with a focus on energy and water efficiency. Further, the project will hold and treat stormwater, preventing its release off-site. This aspect of the project has the secondary benefit of reducing contributions to South Burlington's wastewater system.

Other opportunities to protect local and regional water resources that have been implemented at other airports and could be adopted by BTV include:

- › Developing a baseline for Airport-wide water consumption;
- › Installing metering networks to accurately quantify and assess water consumption on an ongoing basis;
- › Upgrading flow and flush fixtures to low/no flow alternatives to reduce water consumption; and
- › Specifying non-toxic fertilizers and other maintenance materials such as exterior cleaning products, as well as environmentally-preferred pavement de-icers.

SMART WaterWays



© SMART WATERWAYS

Regional Coordination

As a major consumer of water and a popular transportation hub, BTV's actions can have a big impact on regional water resources. Accordingly, it works with regional entities toward achieving common goals. This is exemplified by BTV's support for the Regional Stormwater Education Program –the members of which collectively provide stormwater education services to inform residents of Chittenden County on ways to reduce stormwater pollution to local surface waters and Lake Champlain. The program maintains a website at <http://www.smartwaterways.org>.

PASSENGER EXPERIENCE

BTV is the gateway to an exciting visit to Vermont, a homecoming after a long trip, or a stop along the way to a new adventure.

Passenger experience and well-being are important components of BTV's concept of sustainability and it is committed to creating a safe, comfortable, and enjoyable visit for the hundreds of thousands of passengers who pass through the Airport's doors every year.

674,944

passengers departed from
BTV in CY 2018

BTV makes a variety of amenities available to passengers, from spaces to relax before catching a flight to activities and exhibits that teach participants about the Airport's history, environment, and sustainability achievements.

BTV's Wellness Committee supports a healthier Airport visit with walking trails inside and outside the terminal. This Committee is always looking for ideas on how to make traveling with BTV less stressful.

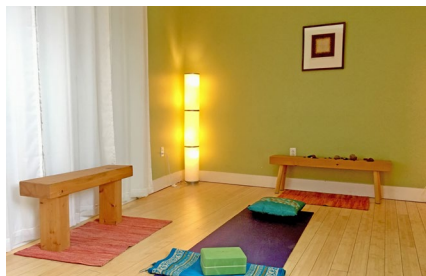
Highlighted Initiatives

Passenger Activities and Amenities

BTV prides itself on being close, convenient, and comfortable. It strives to provide a welcoming experience for its visitors, and accordingly offers a variety of amenities such as relaxing areas with couches, coffee tables, and easy chairs (rocking chairs are also strewn about the terminal); free wireless Internet; an exhibit on the history of the Airport; and a yoga studio operated by Burlington-based Evolution Physical Therapy + Yoga. Visitors can also watch planes take off from the observation tower.

Sense of Place

Key to the passenger experience at the Airport is its reflection of the region. Stores like Discover Vermont/Hudson, Lake Champlain News, and Mount Mansfield News, as well as food establishments including The Skinny Pancake remind visitors of their location and its attractions and products. Further, through its food and beverage concessions, BTV strives to source food from within 100 miles.



Passenger Survey

As part of the process to update the Airport’s Master Plan, BTV conducted a passenger survey to determine how the passengers interact with Airport facilities and to understand how better to serve their needs. The survey focused on the terminal and its passenger amenities including, but not limited to, automobile parking, ground access, airline schedules, mode of transportation, ticketing, the Transportation Security Administration (TSA), gates, and food vendors.



Based on the survey’s 912 responses, BTV is proud that many passengers are pleased with the Airport’s overall convenience, wait times at the ticketing area, and traffic volumes to and from the Airport. In addition, most passengers felt that the Airport’s look and feel represented that of the City of Burlington and Vermont broadly.

LOOKING FORWARD TO THE FUTURE

WE HEARD YOU! In response to feedback gathered through the passenger survey, BTV is looking forward to addressing concerns raised by survey participants such as having few food options both before and after the security checkpoint, as well as the lack of available non-stop destinations.



Art installations and exhibits around the Airport feature local artists.

PHOTO CREDITS: VHB






**THANK YOU &
STAY TUNED!**

We appreciate your interest in sustainability at the Burlington International Airport and are proud to share our accomplishments to-date in the areas of Energy and Greenhouse Gas Emissions, Waste Management, Ground Transportation, Water Resources, and Passenger Experience.

We are committed to building on this work to ensure more efficient operations that protect and enhance the environment in which we conduct our business as well as support a top-notch passenger experience that is reflective of the unique characteristics that make the Greater Burlington Region and the great State of Vermont such a welcoming place.



**Contact
Information**

Gene Richards
Director of Aviation
GRichards@btv.aero

Stay tuned for more information on our sustainability activities and related performance, including strategies coordinated with our regional partners. In the meantime, we encourage you to contact us with your ideas and suggestions. No idea is too big or small!

For more information on the Airport's Master Plan Update, please visit <http://btvmasterplan.com>.





Sustainability Takes Flight 2019 Highlights Report



© Julie C. Richards Photography

Prepared by

