



BURLINGTON INTERNATIONAL AIRPORT

DATE: January 29, 2008
TO: James Pease
FROM: Heather Kendrew
RE: MS4 Buffer Report

The Burlington International Airport, located in South Burlington, Vermont, has property which abuts the Centennial Brook and Potash Brook watersheds. The airport will comply with local and Act 250 permitting regulations in regards to stream buffers at these locations unless directed otherwise by federal regulations specific to airports.

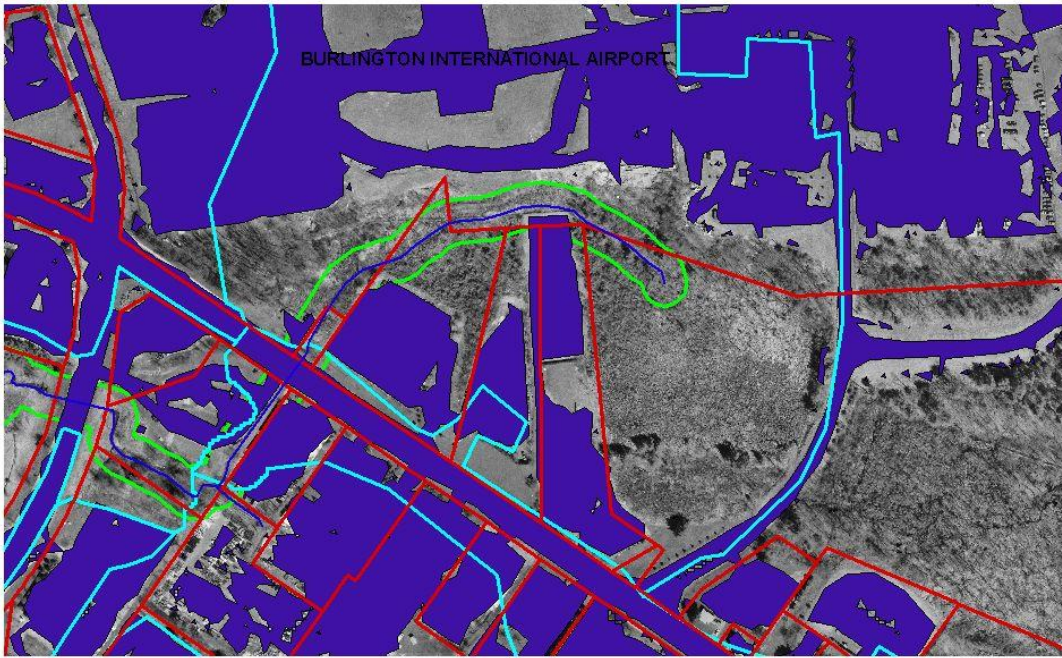
The airport does not intend to, or support enhancement of the vegetative buffer for any wetlands on or abutting the airport property. The Federal Aviation Administration (FAA Advisory Circular 150/5200-33B), recommends a distance of 5 statute miles between the farthest edge of the airport's air operations area (AOA) and hazardous wildlife attractants if the attractant could cause hazardous wildlife movement into or across the approach or departure airspace. Vegetative buffers along waterways near airports are considered a hazardous wildlife attractant.

Therefore, it is the airports intent to maintain the existing cover in both the Potash and Centennial Brook watersheds as long as they are not impacting Transportation Security Agency (TSA) or Federal Aviation Administration requirements for security buffers and clearances surrounding airport property.






If you have any questions or need further information, please let me know. Thank you.

1200 Airport Drive, #1
South Burlington, Vermont 05403

Phone: (802)-863-2874 (TTY)
Fax: (802)-863-1526



Potash Brook Watershed

-  Potash Brook
-  Burlington Parcel Boundaries
-  Impervious Watershed (Impv)
-  Potash Brook - Central - Barlett Impervious
-  Potash Brook Tributary - Buffer

300 0 300 600 Feet





Centennial Brook Watershed



- Centennial Brook
- Streets
- Subdivision parcel boundaries
- Impervious Surface/Impervious
- Flow Accumulation/Flow Accumulation
- ST Centennial Brook

